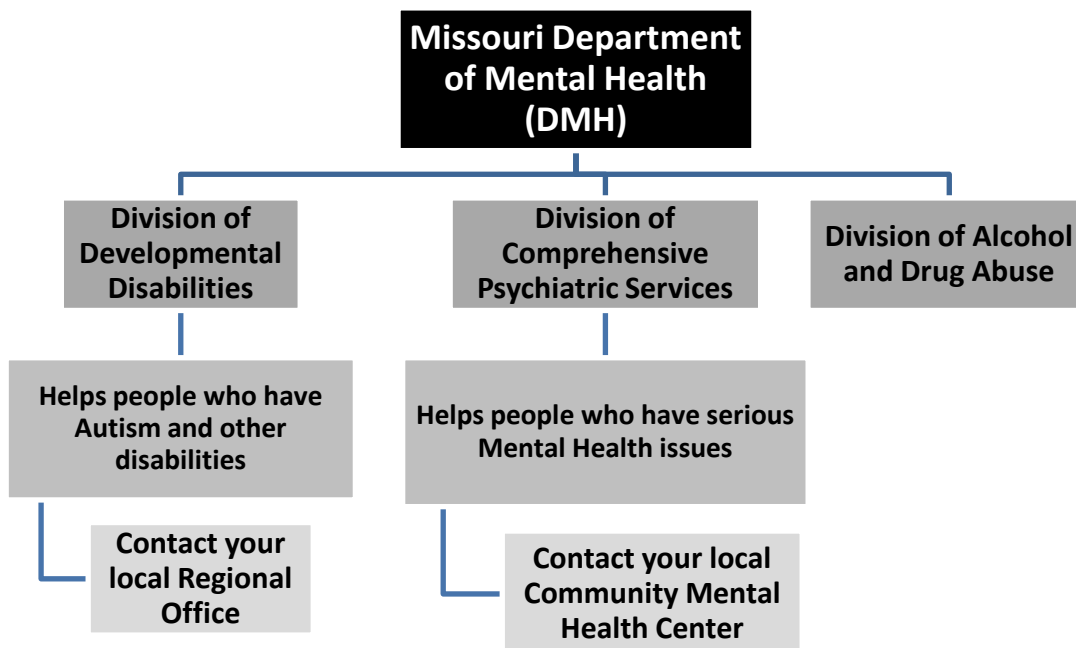


Finding Help and Services for Autism in Missouri

Mental Health Services in Missouri

How the Mental Health System Works



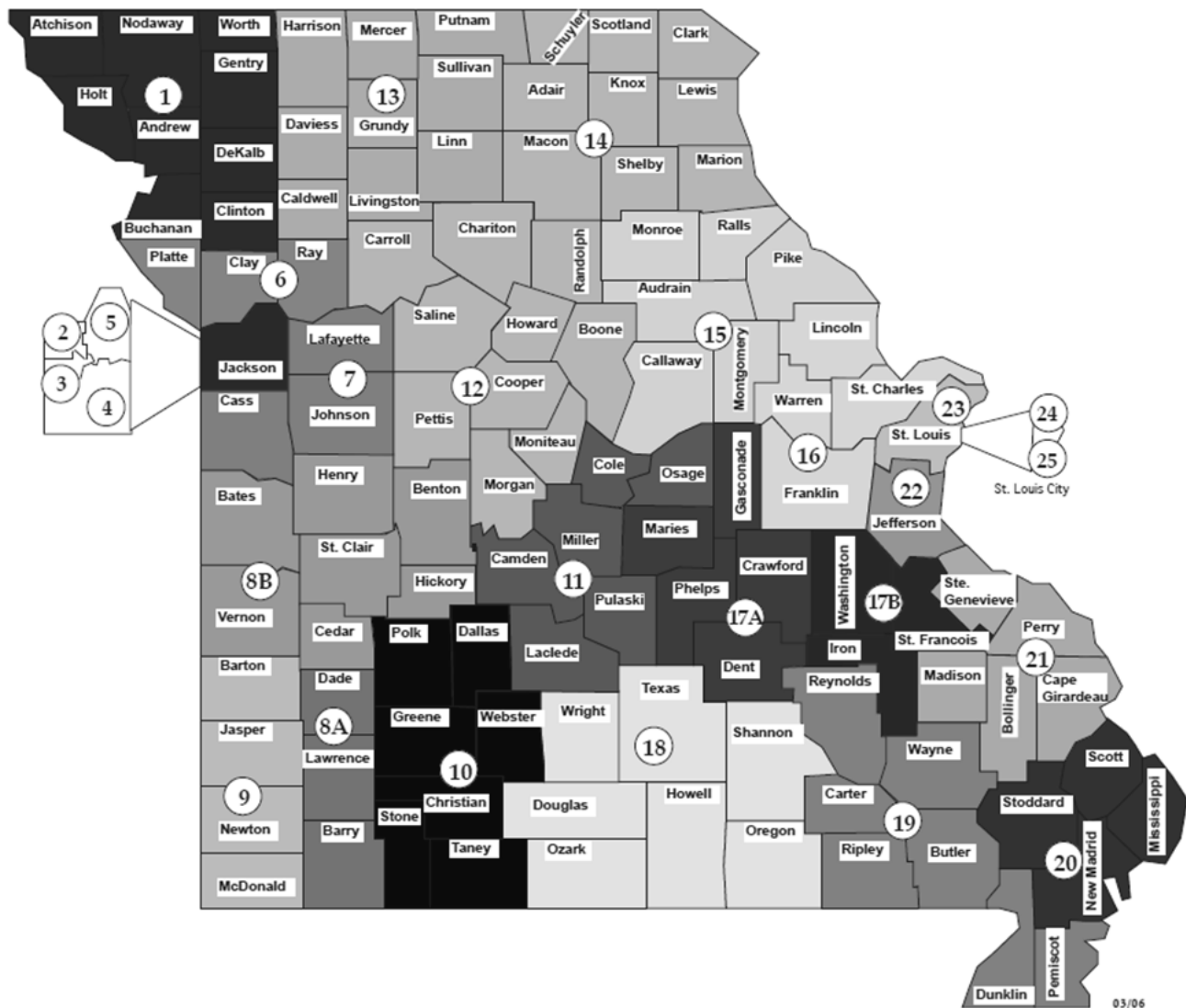
The Missouri Department of Mental Health (DMH) has two divisions that are an important source of help for people who have autism and people who have mental illnesses –

- 1) the Division of Developmental Disabilities, and
- 2) the Division of Comprehensive Psychiatric Services.

Where should I call for help?

- If you have a case manager already, contact that person first for help.
- If you do not have a case manager, contact your local Regional Office first (see pages 7-8) to find out whether your loved one might be eligible for services through the Division of Developmental Disabilities.
- If the person with autism also has a serious mental illness, call your local Community Mental Health Center to find out whether your loved one might also be eligible for services through the Division of Comprehensive Psychiatric Services.
- If you are not sure who to call, call your local Regional Office and ask for help.

Community Mental Health Centers



What are Community Mental Health Centers?

Community mental health centers (CMHC) provide psychological and psychiatric care for people with serious mental illness. Even if a child or adult receives help through the Regional Office, that person may also be able to use the mental health services at their community mental health center (CMHC). Call the Intake Department of your CMHC to ask about screening for eligibility.

The CMHCs do accept Medicaid and have sliding fee scales for uninsured persons. The staff at the centers may or may not have training or experience in working with people who have autism spectrum disorders.

You can find the main community mental health center (CMHC) for each region of Missouri on the next pages. Find your region on the map above and look on the next pages to find that number. There might be other offices that are closer to you. Ask when you call.

Finding Help and Services for Autism in Missouri

Community Mental Health Centers

What Does the Division of Comprehensive Psychiatric Services (CPS) Do?

If your loved one has a mental health diagnosis in addition to autism, he or she might also qualify for services through the Division of Comprehensive Psychiatric Services (CPS). Services might include psychology, psychiatry, counseling, residential services, in-home supports, or other types of help.

STATEWIDE

Missouri Department of Mental Health Division of Comprehensive Psychiatric Services (CPS)

Phone: (573) 751-8017

E-mail: cpsmail@dmh.mo.gov

Website: www.dmh.mo.gov/cps/cpsindex.htm

CENTRAL MISSOURI

12

Burrell Behavioral Health Central Region

601 Business Loop 70 W
Columbia, Missouri 65201
Telephone number: 573-777-7550
Crisis line: 1-800-395-2132

11

Pathways Community Behavioral Healthcare

1905 Stadium Boulevard
Jefferson City, Missouri 65109
Telephone number: 573-634-3000
Crisis line: 1-800-833-3915
Website: www.pathwaysonline.org

17A

Pathways Community Behavioral Healthcare

P.O. Box 921
1450 E. Tenth St.
Rolla, MO 65401
Telephone number: 573-364-7551
Crisis number: 1-800-833-3915
Website: www.pathwaysonline.org

15

East Central Missouri Behavioral Health Services (Arthur Center)

321 West Promenade
Mexico, Missouri 65265
Telephone number: 573-582-1234
Crisis line: 1-800-833-2064
Website: www.mocmhc.org/memberagencies/arthur.htm

GREATER KANSAS CITY AND WESTERN MO

5

Comprehensive Mental Health Services

10901 Winner Road
Independence, Missouri 64052
Telephone number: 816-254-3652
Crisis line: 1-888-279-8188
Website: www.thecmhs.com

Additional Site:

Mattie Rhodes Center

1740 Jefferson Street
Kansas City, Missouri 64108
Telephone number: 816-471-2536
Website: www.mattierhodes.org
Certified Programs: Outpatient Mental Health, Spanish

8b

Pathways Community Behavioral Healthcare, Inc.

1800 Community Drive
Clinton, Missouri 64735
Telephone number: 660-885-8131
Crisis line: 1-800-833-3915
Website: www.pathwaysonline.org

7

Pathways Community Behavioral Healthcare, Inc.

520C Burkarth Road
Warrensburg, Missouri 64093
Telephone number: 660-747-2286
ACI crisis line: 1-888-279-8188
Website: www.pathwaysonline.org

4

ReDiscover

901 NE Independence Avenue
Lees Summit, Missouri 64086
Telephone number: 816-246-8000
Intake number (24 hours): 816-966-0900
Crisis line: 1-888-279-8188
www.rediscovermh.org

3

Swope Health Services

3801 Blue Parkway
Kansas City, Missouri 64130
Telephone number: 816-922-7645
Crisis line: 1-888-279-8188
Website: www.swopehealth.org/serv_behavioral.html

6

TriCounty Mental Health Services

3100 NE 83 rd Street
Kansas City, Missouri 64119
Telephone number: 816-468-0400
Crisis line: 1-888-279-8188
Website: www.tricountymhs.org

2

Truman Medical Center – Behavioral Health

2211 Charlotte
Kansas City, Missouri 64111
Telephone number: 816-404-5700
Crisis line: 1-888-279-8188
Website: www.trumanmed.org/sections/content.aspx?SID=28

NORTH CENTRAL MISSOURI

13

North Central Missouri Mental Health Center

1601 E. 28th Street
Trenton, Missouri 64683
Telephone number: 660-359-4487
Crisis line: 1-888-279-8188
Website: www.mocmhc.org/memberagencies/north.htm

NORTHEAST MISSOURI

14

Mark Twain Behavioral Health

917 Broadway
Hannibal, Missouri 63401
Telephone number: 573-221-2120
Crisis line: 1-800-356-5395
Website: www.mtacc.org

NORTHWEST MISSOURI

1

Family Guidance Center for Behavioral Healthcare

724 North 22nd Street
St. Joseph, Missouri 64506
Telephone number: 816-364-1501
Crisis line: 1-888-279-8188
Website: www.familyguidance.org

SOUTH CENTRAL MISSOURI

18

Ozarks Medical Center Behavioral Healthcare

909 Kentucky Avenue
West Plains, Missouri 65775
Telephone number: 417-257-6762
Crisis line: 1-800-356-5395
Website: www.ozarksmedicalcenter.com/behavioral.html

SOUTHEAST MISSOURI

20

Bootheel Counseling Services

760 Plantation Boulevard
Sikeston, Missouri 63801
Telephone number: 573-471-0800
Crisis line: 1-800-356-5395
Website: www.bootheelcounseling.com

21

Community Counseling Center

402 S. Silver Springs Road
Cape Girardeau, Missouri 63703
Telephone number: 573-334-1100
ACI crisis line: 1-800-356-5395
Website: www.cccntr.com

19

Family Counseling Center

925 Highway VV
Kennett, Missouri 63857
Telephone number: 573-888-5925
Crisis line: 1-800-356-5395
Website: www.familycounselingcenter.org

SOUTHWEST MISSOURI

10

Burrell Behavioral Health

1300 Bradford Parkway
Springfield, Missouri 65804
Telephone number: 417-269-5400
Crisis line: 1-800-494-7355
www.coxhealth.com/services/behavioralhealth/default.htm

2009 MO-FEAT Autism Resource Directory

8A

Clark Community Mental Health Center

104 W. Main
P.O. Box 100
Pierce City, Missouri 65723
Telephone number: 417-476-1000
Crisis number: 1-800-801-4405
Website: www.clarkmentalhealth.com

9

Ozark Center

3006 McClelland
P.O. Box 2526
Joplin, Missouri 64804
Paula Baker, MS, Chief Executive Officer
Telephone number: 417-781-2410
Crisis line: 1-800-247-0661
Website: www.mocmhc.org/memberagencies/ozark.htm

ST. LOUIS AND EASTERN MISSOURI

23 and 25

BJC Behavioral Health

1430 Olive Street, Suite 500
St. Louis, Missouri 63103
Telephone number: 314-206-3700
Crisis line: 1-800-811-4760
Website: www.bjcbehavioralhealth.org

North Site:

3165 McKelvey Road, Suite
Bridgeton, Missouri 63044
Telephone number: 314-206-3900

South Site:

343 S Kirkwood Road, Suite 200
Kirkwood, Missouri 63122
Telephone number: 314-206-3400

17B

BJC Behavioral Health

1085 Maple Street
Farmington, Missouri 63640
Telephone number: 573-756-5353
Crisis line: 1-800-811-4760
Website: www.bjcbehavioralhealth.org

15

East Central Missouri Behavioral Health Services (Arthur Center)

321 West Promenade
Mexico, Missouri 65265
Telephone number: 573-582-1234
Crisis line: 1-800-833-2064
Website: www.mocmhc.org/memberagencies/arthur.htm

22

Comtrea Community Treatment

Crisis line: 1-800-811-4760
Website: www.comtrea.org

227 Main Street
Festus, Missouri 63028
Telephone number: 636-931-2700

21 Municipal Drive
Arnold, Missouri 63010
Telephone number: 636-931-2700 x345

16

Crider Center for Mental Health

1032 Crosswinds Court
Wentzville, Missouri 63385
Telephone number: 636-332-6000, 1-800-574-2422
Crisis line: 1-800-811-4760
Website: www.cridercenter.org

Additional Site:

International Institute of Metropolitan St. Louis

3654 South Grand
St. Louis, Missouri 63108
Telephone number: 314-773-9090
Website: www.iistl.org
Certified Programs: Outpatient Mental Health
Translator Services

If you need a complete list of community mental health providers in your area, go to www.dmh.missouri.gov/cps/providerdirectory Nov08_000.pdf.